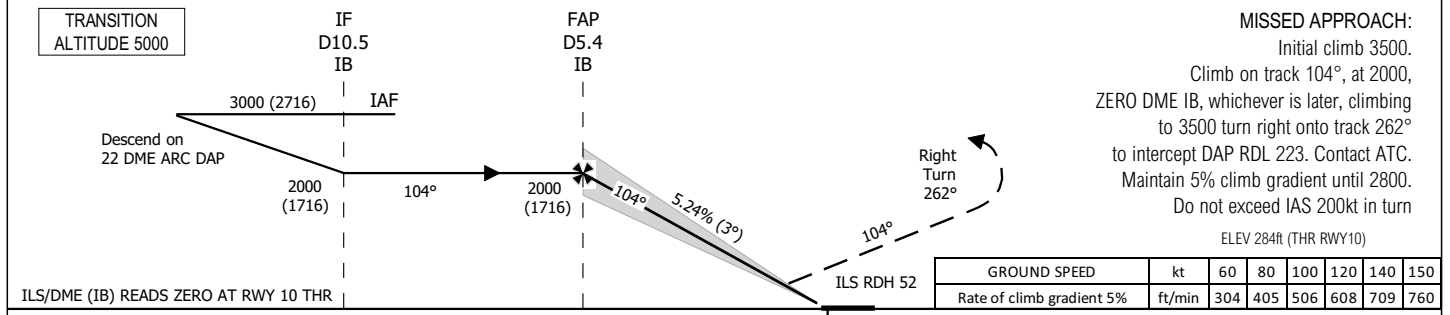
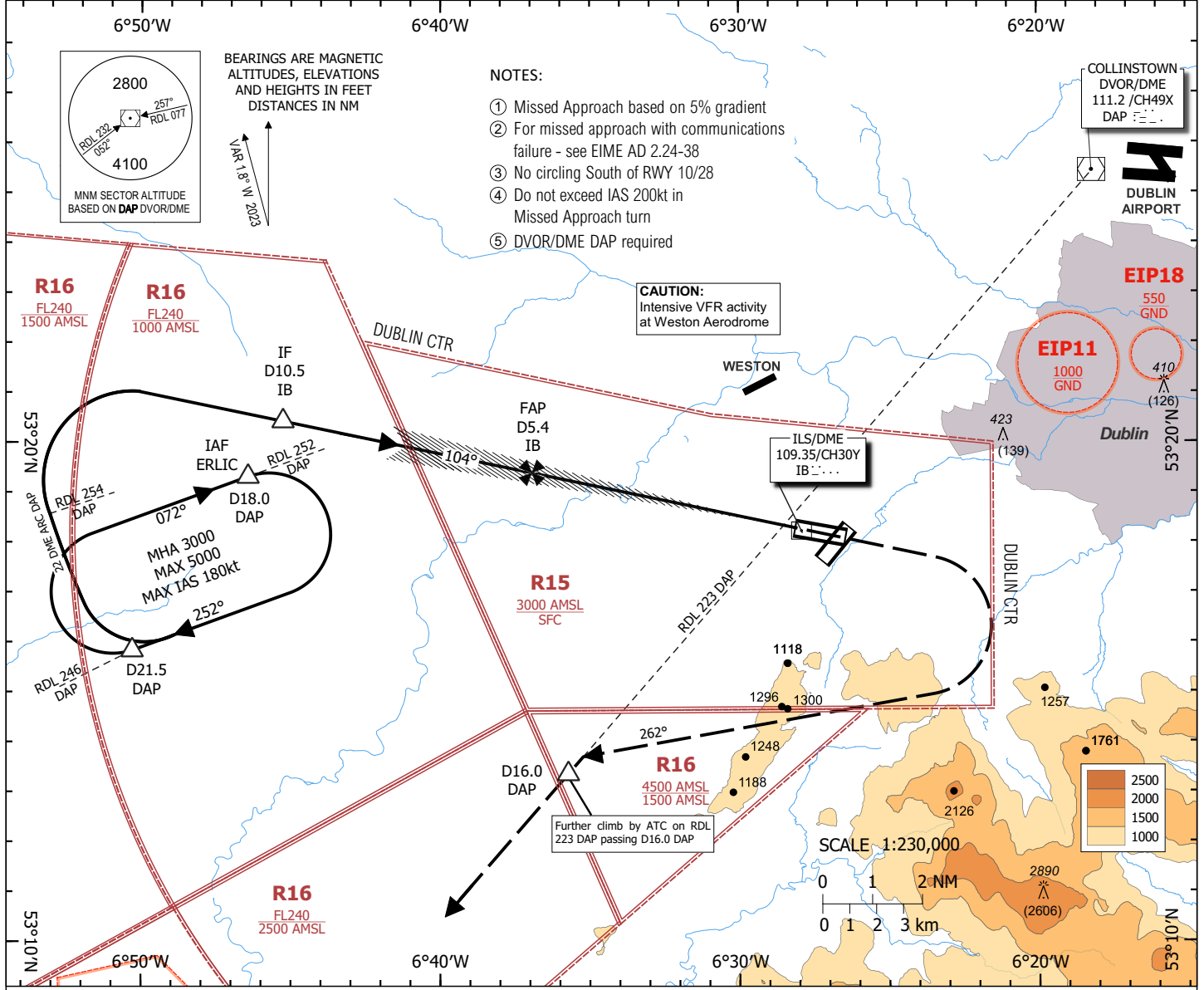


INSTRUMENT APPROACH CHART - ICAO **AERODROME ELEV 319 ft** TWR 123.500
 BAL 122.000
 RADAR 122.000
 ATIS 122.805

CONSULT www.military.ie FOR LATEST INFORMATION

BALDONNEL/CASEMENT (MIL)
ILS W CAT I RWY 10 ①②③④⑤
(ACFT CAT C, D)



STRAIGHT IN LANDING RWY 10 CAT I			LIGHTING							
	OCA(H)	RVR/VIS	ALS OUT	IDEAL ALTITUDE (HEIGHT) ON FINAL APPROACH						
C	492 (208)	750m	1200m	DME (IB)	5.0	4.0	3.0	2.0	1.0	
D	500 (216)	800m	1200m	ALT (HT)	1930 (1646)	1610 (1326)	1290 (1006)	970 (686)	660 (376)	
OCAs based on 2.5% Missed Approach climb gradient			GROUND SPEED							
C	1350 (1066)	4400m	4900m	kt						
D	1360 (1076)	4400m	4900m	ft/min						
CIRCLE TO LAND (heights AAL)			Rate of descent gradient 5.24% (3°)							
C	1000 (681)	2800m		kt						
D	1220 (901)	3900m		ft/min						
CIRCLE TO LAND (heights AAL) based on 2.5% Missed Approach climb gradient			Rate of climb missed approach 2.5%							
C	1390 (1071)	4900m		GROUND SPEED						
D	1400 (1081)	4900m		kt						
			Rate of climb gradient 2.5%							
			ft/min							