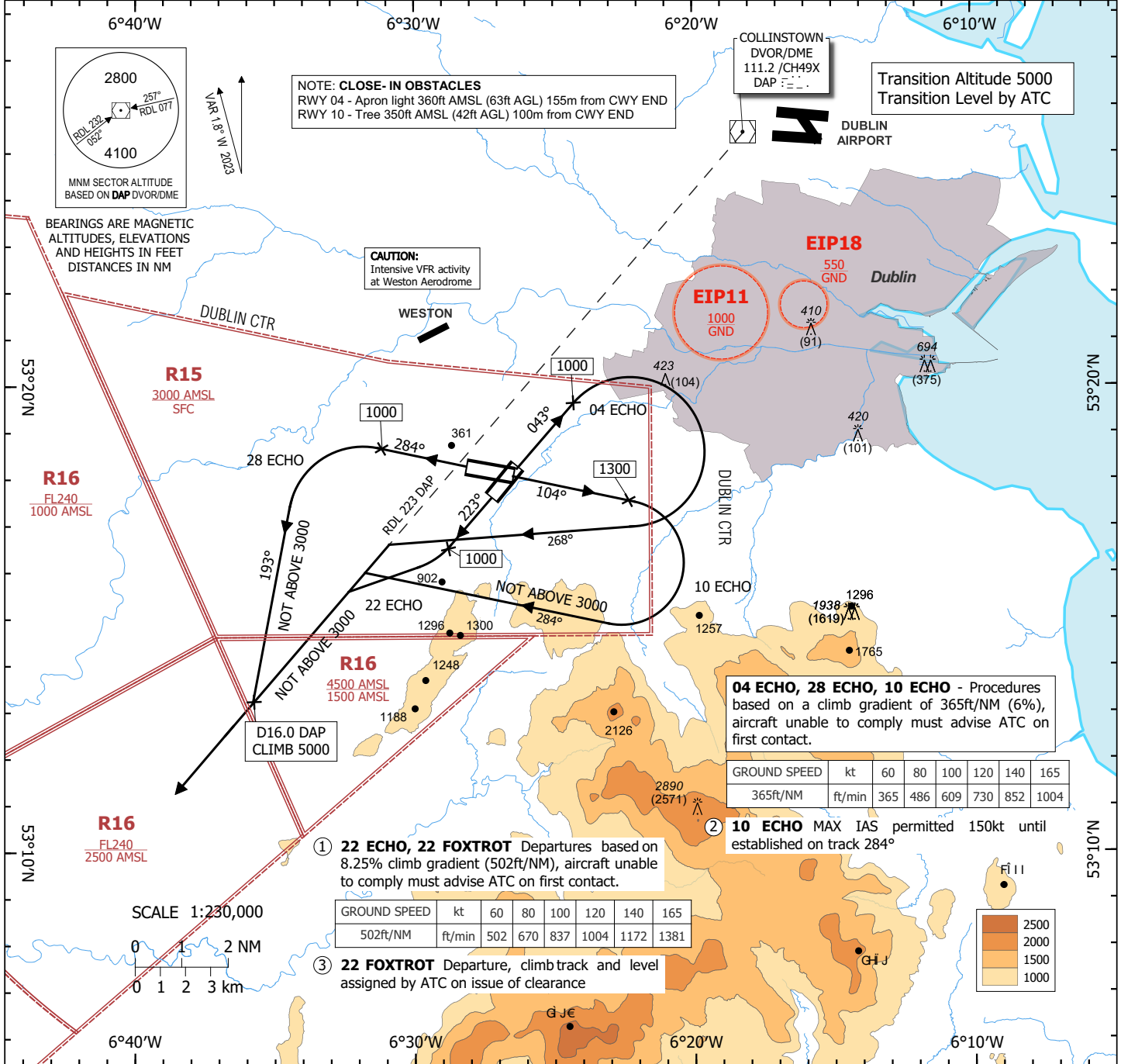


INSTRUMENT DEPARTURE CHART - ICAO **AERODROME ELEV 319 ft** TWR 123.500
 BAL 122.000
 RADAR 122.000
 ATIS 122.805

CONSULT www.military.ie FOR LATEST INFORMATION

BALDONNEL/CASEMENT (MIL) DEPARTURES
 RWYs 28, 10, 22, 04 ①②③
 (ACFT CAT A, B)



Departure	Routeing	Climb Instruction
04 ECHO	Climb on runway track, at 1000 turn right to track 268° to intercept RDL 223 DAP outbound	Climb 3000 Passing D16.0 DAP outbound on RDL 223 continue climb to 5000. Maintain 6% climb gradient until 2800
22 ECHO ①	Climb on runway track, at 1000 turn right to intercept RDL 223 DAP outbound	Climb 3000 Passing D16.0 DAP outbound on RDL 223 continue climb to 5000. Maintain 8.25% climb gradient until 2800
10 ECHO ②	Climb on runway track, at 1300 turn right to track 284° to intercept RDL 223 DAP outbound	Climb 3000 Passing D16.0 DAP outbound on RDL 223 continue climb to 5000. Maintain 6% climb gradient until 2800
28 ECHO	Climb on runway track, at 1000 turn left to track 193° to intercept RDL 223 DAP outbound	Climb 3000 Passing D16.0 DAP outbound on RDL 223 continue climb to 5000. Maintain 6% climb gradient until 2800
22 FOXTROT ①③	Climb on track 238°, at 1000 turn right to track assigned by ATC	Climb to assigned level Maintain 8.25% climb gradient until initial assigned level