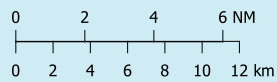


CHANGE: REVISED PROCEDURE AND CIRCLE TO LAND OCA(H) FIGURES AND CEILINGS

NOTES:

- ① Timing of Final Approach not permitted
- ② No circling South of RWY 10/28
- ③ Procedure contained in Dublin CTA/CTR
- ④ 5% climb gradient in Missed Approach for airspace
- ⑤ For missed approach with communications failure - see EIME AD 2.24-25
- ⑥ OCA IF SDF not used 1300ft

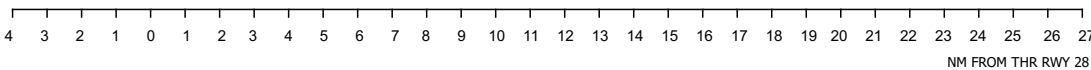
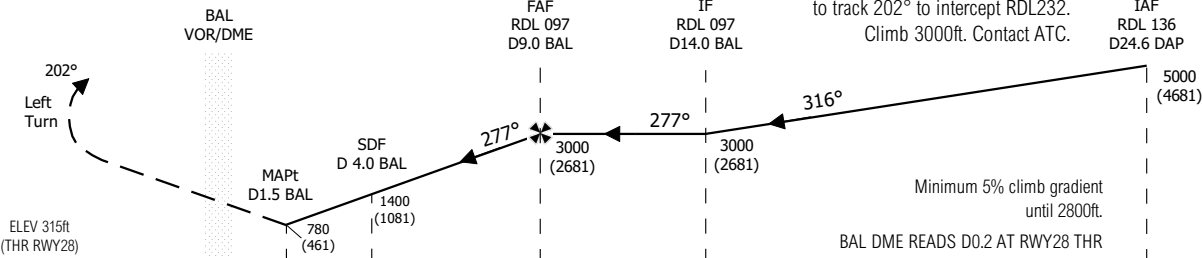
SCALE 1:400,000



TRANSITION ALTITUDE 5000 ft

MISSED APPROACH:

At D1.5 DME climb to BAL or 1100ft whichever is later turn left to track 202° to intercept RDL232. Climb 3000ft. Contact ATC.



STRAIGHT IN LANDING RWY28	CAT	IDEAL ALTITUDE (HEIGHT) ON FINAL APPROACH				IDEAL ALTITUDE (HEIGHT) ON FINAL APPROACH										
		A	B	C	D	DME (BAL)	9.0	8.0	7.0	6.0	5.0	4.0	3.0	2.0		
OCA (H) 780 (461)	CEILING	500	500	500	500	ALT (HT)	3000 (2681)	2710 (2391)	2410 (2091)	2120 (1801)	1820 (1501)	1530 (1211)	1230 (911)	930 (611)		
	VIS	2000	2000	2400	2800	GROUND SPEED		kts		60	80	100	120	140	160	180
CIRCLE TO LAND (Heights AAL)	ALS OUT	2400	2400	2800	3200	Rate of descent gradient 4.88%		ft/min		297	395	494	593	692	791	890
	OCA (H)	830 (511)	830 (511)	930 (611)	1010 (691)	LIGHTING PAPI 3° REIL RWY LTs SALS										
	CEILING	600	600	700	700											
	VIS	2000	2000	2800	3600											