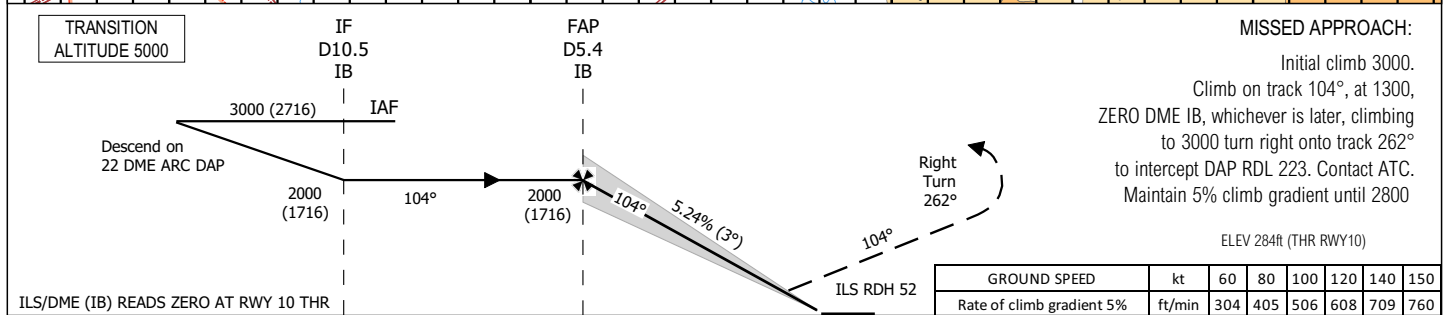
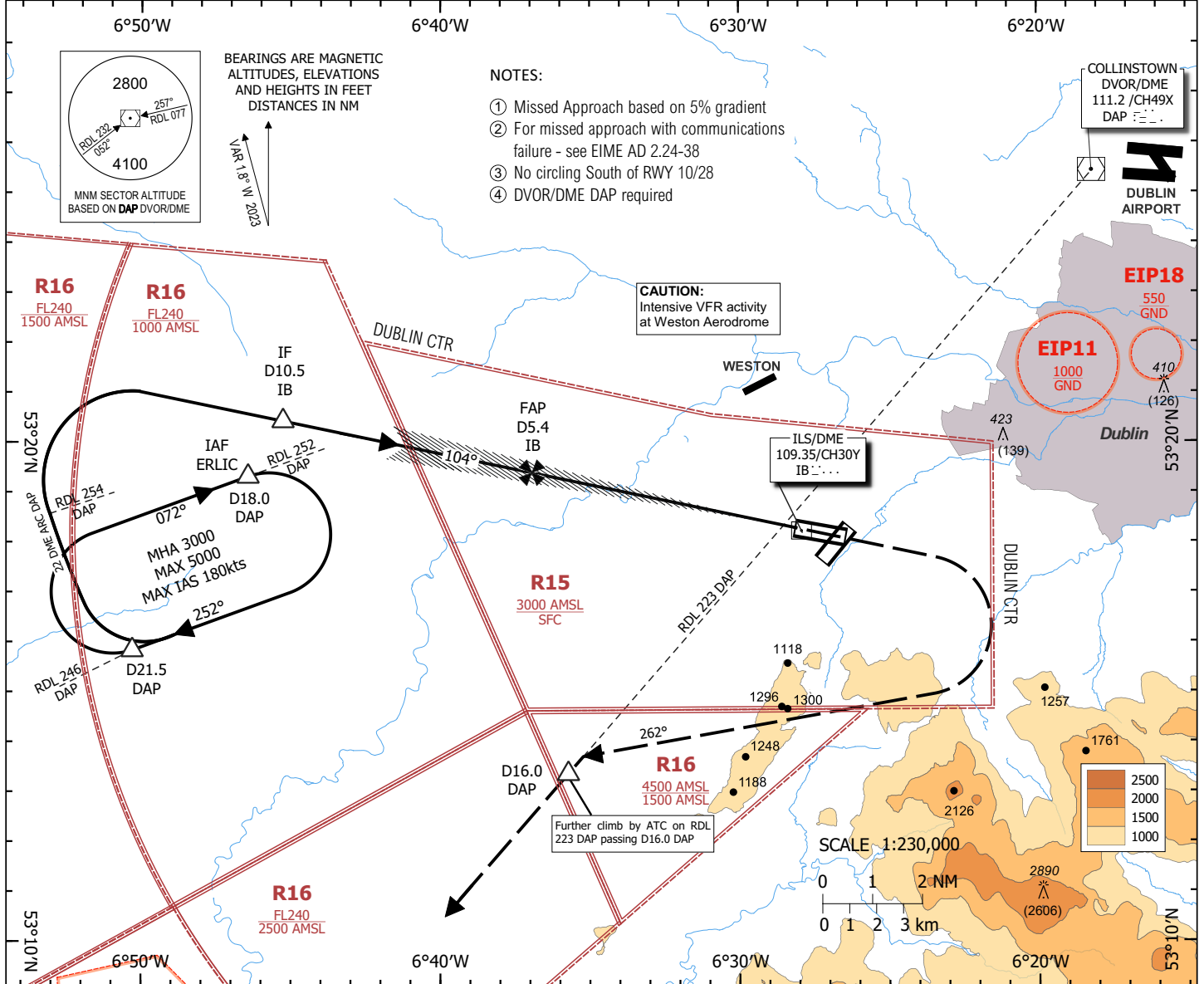


INSTRUMENT APPROACH CHART - ICAO **AERODROME ELEV 319 ft** TWR 123.500
 BAL 122.000
 RADAR 122.000
 ATIS 122.805

CONSULT www.military.ie FOR LATEST INFORMATION

BALDONNEL/CASEMENT (MIL)
 ILS X CAT I RWY 10 ① ② ③ ④
 (ACFT CAT A, B)



STRAIGHT IN LANDING RWY 10 CAT I		
	OCA(H)	ALS OUT
A	474 (190)	1200m
B	482 (198)	1200m
OCAs based on 2.5% Missed Approach climb gradient		
A	870 (586)	2700m
B	960 (676)	3100m
CIRCLE TO LAND (heights AAL)		
	OCA(H)	RVR/VIS
A	900 (581)	2300m
B	900 (581)	2300m
CIRCLE TO LAND (heights AAL) based on 2.5% Missed Approach climb gradient		
A	910 (591)	2700m
B	1000 (681)	3100m

LIGHTING	IDEAL ALTITUDE (HEIGHT) ON FINAL APPROACH											
	DME (IB)	5.0	4.0	3.0	2.0	1.0						
PAPI 3°	ALT (HT)	1930 (1646)	1610 (1326)	1290 (1006)	970 (686)	660 (376)						
REILS	GROUND SPEED					kt	60	80	100	120	140	150
RWY LTS	Rate of descent gradient 5.24% (3°)					ft/min	318	424	530	636	743	796
SALS	Rate of climb missed approach 2.5%											
GROUND SPEED						kt	60	80	100	120	140	150
Rate of climb gradient 2.5%						ft/min	152	203	254	304	355	380