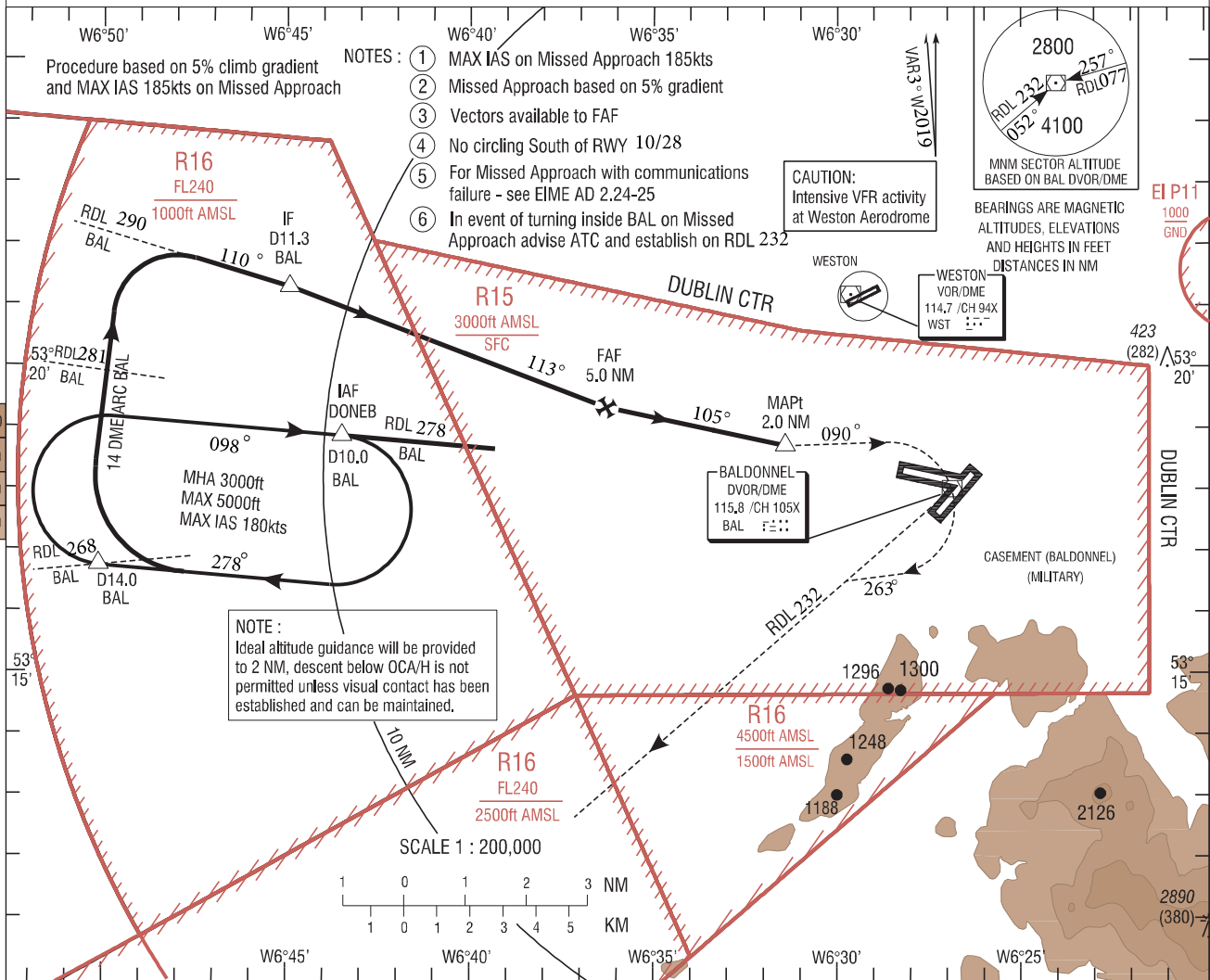
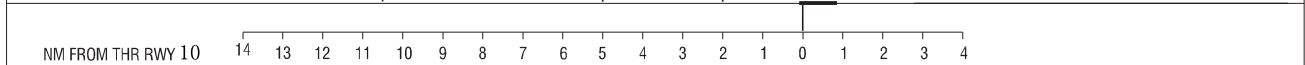
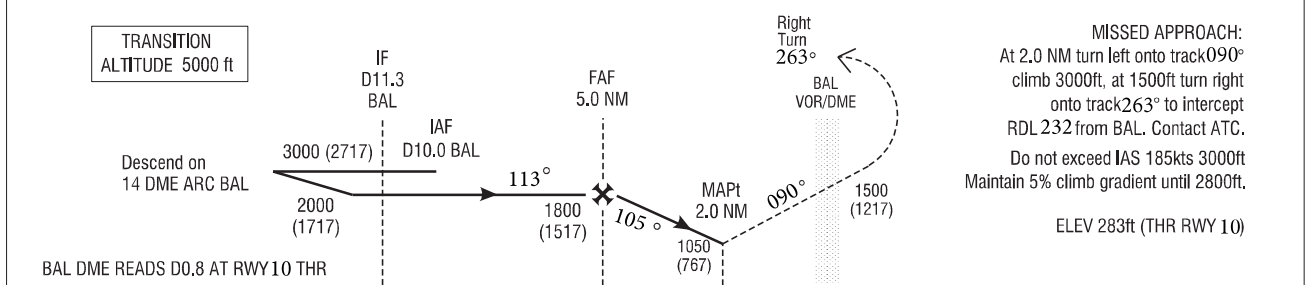


INSTRUMENT APPROACH CHART - ICAO	AERODROME ELEV 319 ft HEIGHTS RELATED TO THR RWY 10 - ELEV 283ft	TWR 123.500 BAL RADAR 122.000 ATIS 122.805	CONSULT NOTAM FOR LATEST INFORMATION	BALDONNEL/CASEMENT (MIL) SRA RWY 10 ① ② ③ ④ ⑤ ⑥ (ACFT CAT A, B, C)
---	---	--	--------------------------------------	---



CHANGES: VAR, TRACKS, RADIALS, FREQUENCIES, RWY DESIGNATORS

Mapping based on Ordnance Survey Ireland by Permission of the Government © Government of Ireland Permit Number 7109



STRAIGHT IN LANDING RWY 10 OCA (H) 1050 (767)	CAT	A	B	C	LIGHTING PAPI 3° REIL RWY LTs SALS	IDEAL ALTITUDE (HEIGHT) ON FINAL APPROACH				
	CEILING	800	800	800		Distance (NM)				
	VIS	2000	2000	3600		ALT (HT)				
CIRCLE TO LAND (Heights AAL)	OCA (H)	1050 (731)	1050 (731)	1050 (731)	Rate of descent gradient 5%					
	CEILING	800	800	800	ft/min					
	VIS	2000	2000	3600	Rate of climb gradient 2.5%					
OCAs based on 2.5% Missed Approach climb gradient						GROUND SPEED				
CAT	A	B	C	kts						
OCA	1130	1280	1460	ft/min						